



ASIAN PLASTIC MACHINERY CO., LTD

ISO 9001/14001



Two-Platen Injection Molding Machine



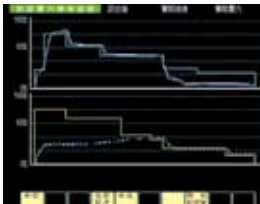
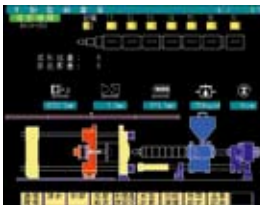


Two-Platen Series

Plastic Injection Molding Machine

Space-friendly · Steadiness · Practicality

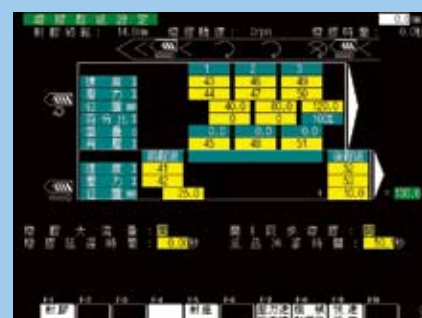
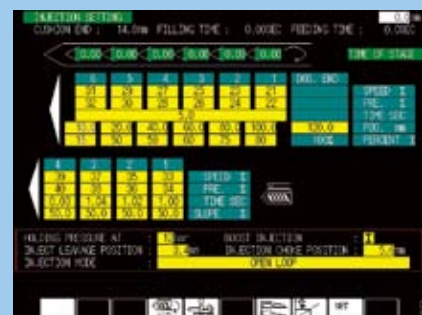
CDC-2000 Control System



- ▲ Japanese-intacted Computer Controller within the extra-large 10.4" (TFT) colorful LCD screen demonstrating for the dynamic motion-graphic. Enlarged the memory capacity for saving the condition of the mold formation data automatically. Enhanced the internal mold no copy skill and the floppy backup freely. Collocated with the RS-232 interface for monitoring the formation data by itself or printing out the parameter by the EPSON STYLUS COLOR printer.
- ▲ Chinese \ English & Japanese (or alternative) language can be freely selected and switchover from one to another at random. Facilitated to learn from the operation circumstances.
- ▲ Graphic curve reappearance of the injection/plasticizing via by the SPC (Statistical Process Control) analysis.
- ▲ 3-stage of the digital back-pressure control independently (Optional).
- ▲ Decompression before/after the Plasticizing selection function.
- ▲ Automatic detection of the nozzle choke and the material overfeeding checkup function.
- ▲ Injection closed-loop & auto holding-pressure selection function (Optional).
- ▲ 6-stage of the injection control (stroke-dependent).
- ▲ 4-stage of the holding-pressure control (time-dependent).
- ▲ Automatically holding-pressure switchover controlled by the time/position/pressure, the later must be installed with the transducer (Optional).
- ▲ 3-stage of the plasticizing control (stroke-dependent) and the screw RPM value display.

CDC-2000

- ▲ Barrel temperature TIMER function and the auto pre-heat selection function.
- ▲ K-type thermocouple failure detection function.
- ▲ Accuracy PID temperature control mode.
- ▲ Temperature heating curve comparison/display between the each zone.
- ▲ Alarm detecting on the control of the high/low deviation temperature.
- ▲ Barrel temperature controlled by the modes of the (HEATER UP(ON)/OFF/STANDBY(Pre-Heat) or under TIMER setting).
- ▲ Nozzle zone PID temperature control independently (Optional).
- ▲ High-accuracy position detection of the low-pressure mold clamping function.
- ▲ Clamp & Injection all adopted as the high-precision optical ENCODER.
- ▲ At least 4-stage of the mold clamping control (stroke-dependent) and the BOOST clamp selection function shortened the cycle time.
- ▲ At least 4-stage of the mold opening control (stroke-dependent).
- ▲ 2-stage of the ejection forward control (stroke-dependent).
- ▲ 2-stage of the ejection backward control (stroke-dependent).
- ▲ Auto Mold Thickness Adjustment (AMTA) and Auto Clamping Force Setting (ACFS) function.
- ▲ 100 sets of the flash ROM memory for saving the mold data.





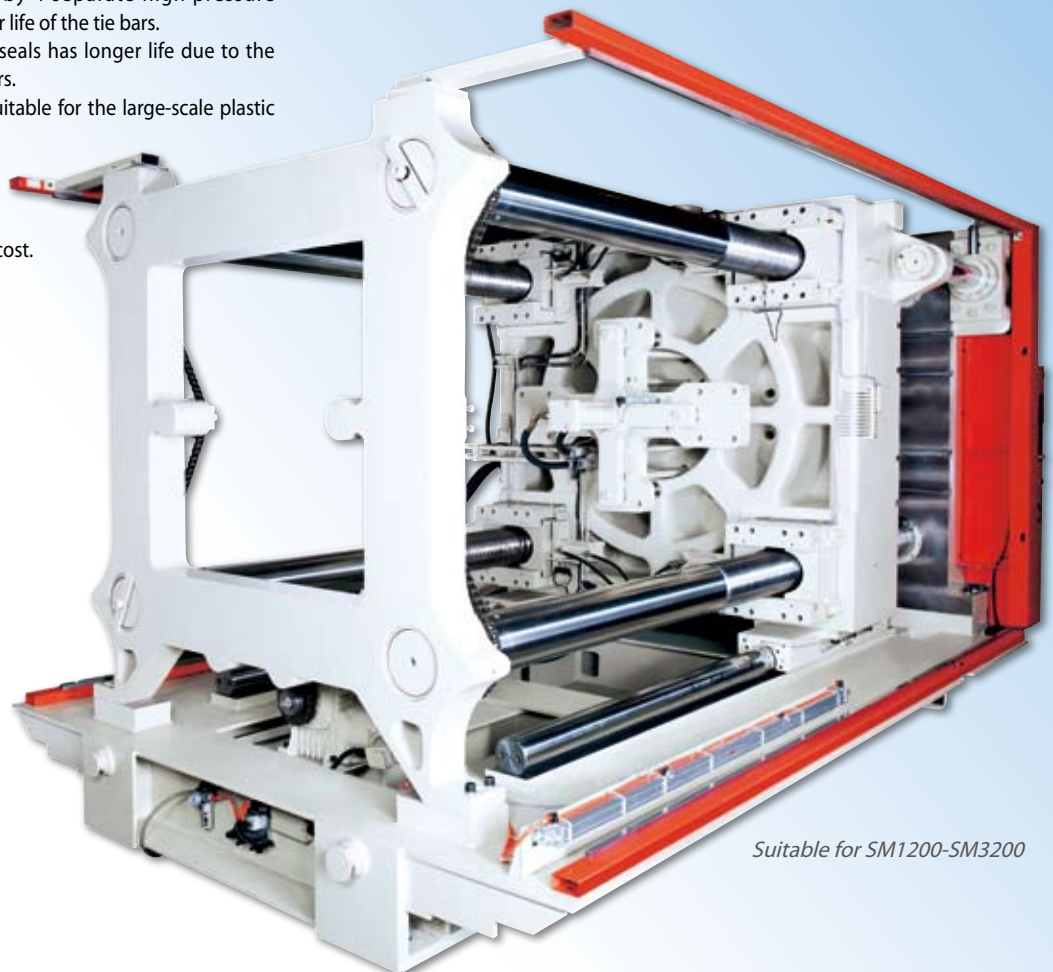
Side guide support mechanism for the Moving Platen,
Suitable for SM700-SM900



Guide column support mechanism for the Moving
Platen, Suitable for SM1200-SM3200

Clamping System

- ▲ 40 years of technological advancements and experience, hence providing Large tonnage machines with high-performance and high efficiency Two-platen series machines.
- ▲ Lightweight \ Logistic friendly \ Cost effective.
- ▲ Easy adjustment of the clamping force via pressure detection.
- ▲ 20% shorter than conventional Injection Molding Machine.
- ▲ Balanced clamping done by 4 separate high-pressure cylinders to assure the longer life of the tie bars.
- ▲ High pressure cylinders oil seals has longer life due to the shorter length of the cylinders.
- ▲ Opening stroke / daylight suitable for the large-scale plastic products.
- ▲ Lesser mechanical parts in comparison with toggle machine, environmental friendly, lower maintenance cost.



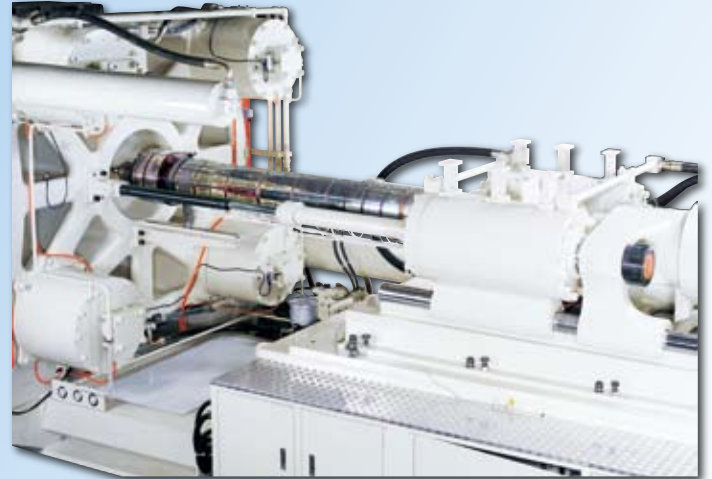
Suitable for SM1200-SM3200



Suitable for SM700-SM900

Injection System

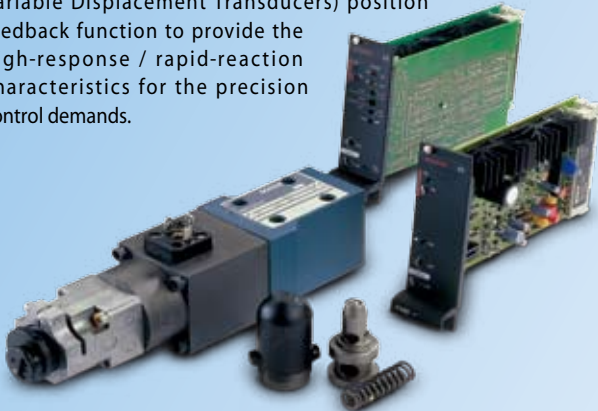
- ▲ Double injection cylinders design reducing transmission distance.
- ▲ Ion nitrided barrel / screw to enhance the wear-resistance.
- ▲ Multi-stage selection of the injection speed / pressure control collocated with high-precision optical ENCODER control which is suitable for the every precision product.
- ▲ 3-stage digital back-pressure control, independently facilitating the control of plasticizing.



Suitable for SM1200-SM3200

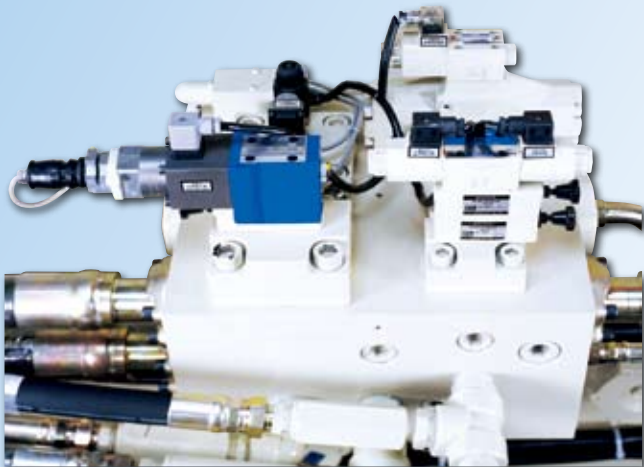
High Response BOSCH Proportional Pressure / Flow Valves

- ▲ BOSCH proportional pressure / flow valves with LVDT (Linear Variable Displacement Transducers) position feedback function to provide the high-response / rapid-reaction characteristics for the precision control demands.



Hydraulic System

- ▲ Adopt as the West Germany-intacted BOSCH proportional pressure / flow valves equipped with the outstanding LVDT via by the pressure transducer detection for the position feedback to assure the quick-control requirements.

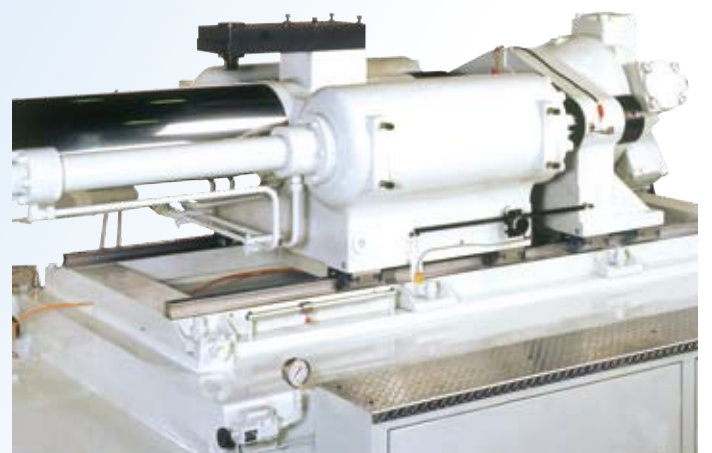


Double Outlet Pump

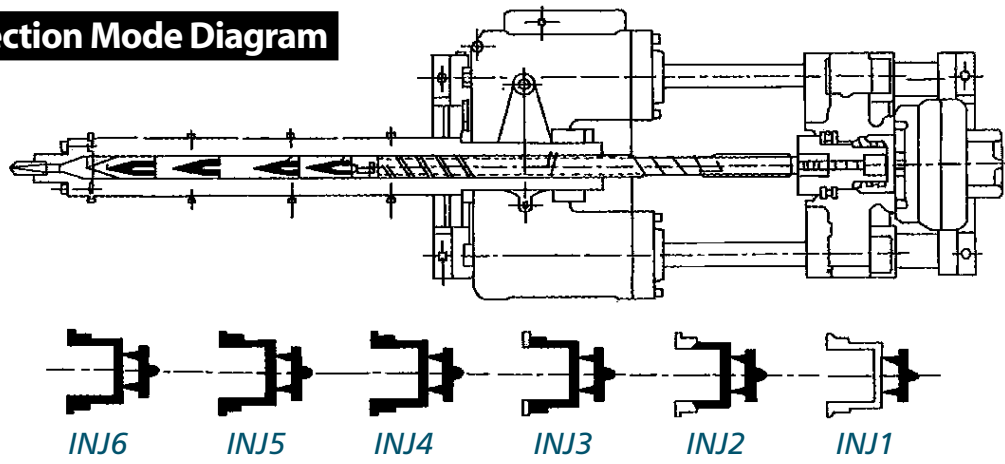
- ▲ YUKEN pump with the hydraulic double-pump loop design providing high-stability and energy saving.



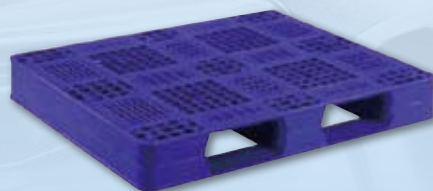
Injection Unit Via Linear Guides (Optional)



Multi-stage Injection Mode Diagram



Product Example



Specification

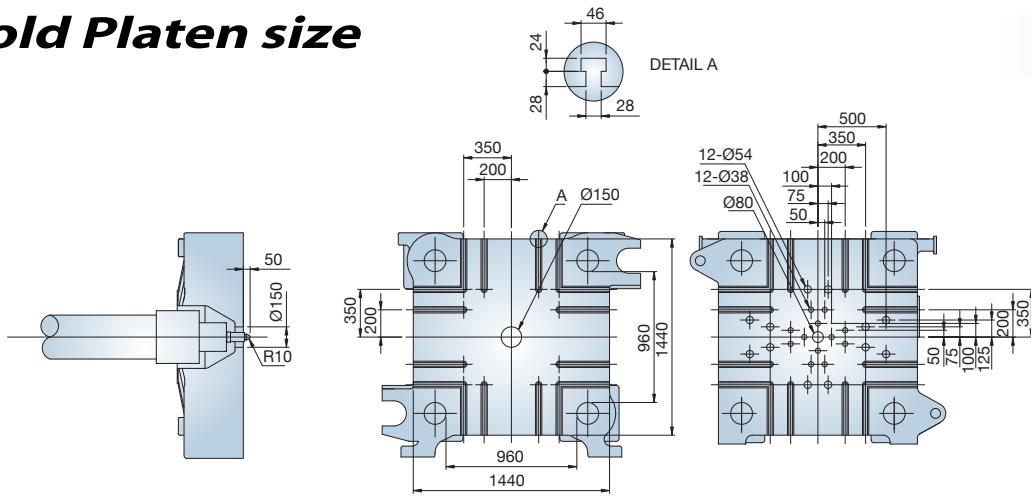
Machine Model	Unit	SM700			SM900		
International Size Code		5180 / 700			7236 / 900		
Injection System							
Theoretical shot volume	cm ³	2554	3190	4277	3190	4277	5973
Shot Weight(PS)	oz	83	103	139	103	139	193
	g	2349	2935	3934	2935	3934	5495
Screw Diameter	mm	85	95	110	95	110	130
Injection Pressure	kgf/cm ²	2020	1620	1210	2260	1690	1210
Injection Rate	cm ³ /sec	560	699	937	739	990	1383
Screw Stroke	mm		450			450	
Screw Rotation	rpm		0-120			0-120	
Plasticizing Capacity(PS)	g/sec	62	77	103	77	116	162
Clamping System							
Clamping Force	ton		700			900	
Opening Stroke	mm		1900			2100	
Max. Daylight	mm		2300			2600	
Mold Height(min-max)	mm		400-1100			500-1200	
Space Between Tie Bar	mmxmm		960*960			1060*1060	
Platen Dimension(H*V)	mmxmm		1460*1440			1740*1740	
Hydraulic Ejector	tonxmm		16*250			18*250	
Power System							
Pump Motor	Kw(Hp)		93Kw(125Hp)			134Kw(180Hp)	
Heating Capacity	Kw		37.1			46.4	
Max. System Pressure	kgf/cm ²		175			175	
Oil Tank Capacity	liter		1200			1400	
General							
Machine Dimension	LxWxH(m)		8.5*2.8*3.3			9.9*3.1*3.4	
Machine Weight	ton		29.5			49.7	

NOTE : ※The above figures are applicable for the voltage/frequency of 220V/60Hz (Specifications can be changed with or without notice)
 ※SM550 has a special structural design (Clamping unit uses a single oil tank while the injection unit uses single cylinder injection)

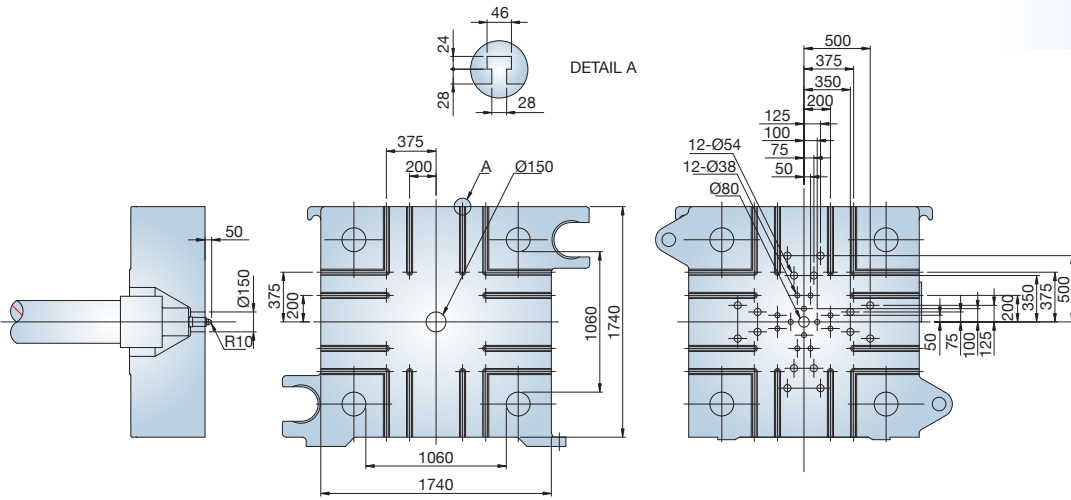
SM1200			SM1500		SM1800		SM2500		SM3200	
11172 / 1200			13854 / 1500		19792 / 1800		26119 / 2500		26119 / 3200	
5322	7433	9247	7433	9247	13210	16085	18096	22902	18096	22902
172	241	300	241	300	428	521	586	742	586	742
4896	6838	8508	6838	8508	12154	14798	16648	21070	16648	21070
110	130	145	130	145	145	160	160	180	160	180
2090	1500	1200	1860	1490	1490	1230	1440	1140	1440	1140
969	1354	1684	1213	1509	1509	1838	1814	2295	1792	2268
	560		560		800		900		900	
	0-120		0-120		0-120		0-100		0-100	
116	162	201	162	201	201	327	272	373	272	373
	1200		1500		1800		2500		3200	
	2300		2400		2600		2700		3000	
	2900		3100		3300		3500		3800	
	600-1300		700-1400		700-1500		800-1700		800-2000	
	1220*1220		1520*1420		1820*1520		2020*1620		2220*1910	
	2000*2000		2400*2400		2460*2400		2890*2490		3200*2900	
	20*250		20*250		30*300		30*300		30*300	
	168Kw(225Hp)		205Kw(275Hp)		205Kw(275Hp)		224Kw(300Hp)		224Kw(300Hp)	
48.1	60.3	60.3	64.1	67.8	67.2		81.3	81.4	81.3	81.4
	175		175		175		175		175	
	2000		3000		3000		3000		3000	
	10.9*3.7*3.6		12.0*3.8*3.7		12.1*4.6*4.1		13.5*5.1*4.5		18.1*5.2*4.7	
	68.3		84.4		110		172.3		224.1	

Mold Platen size

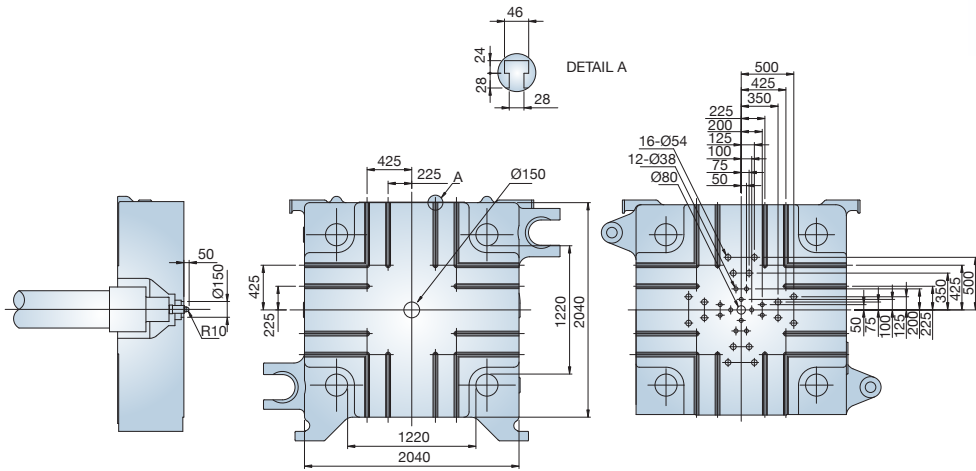
SM700



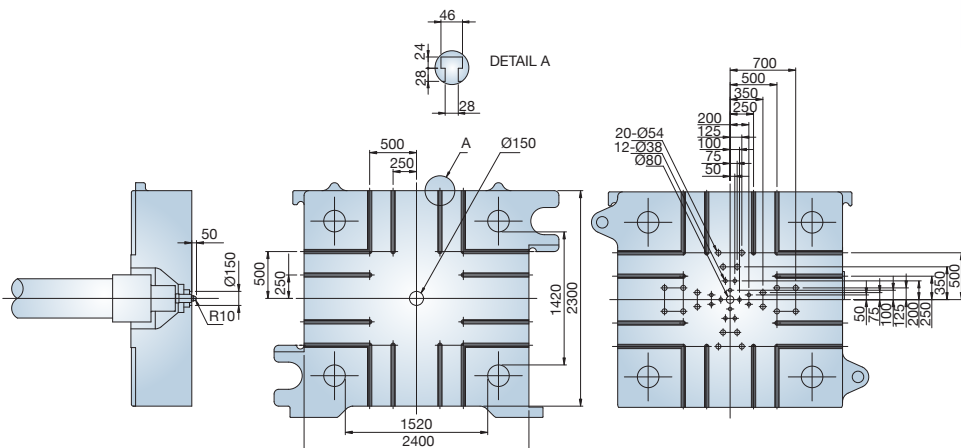
SM900



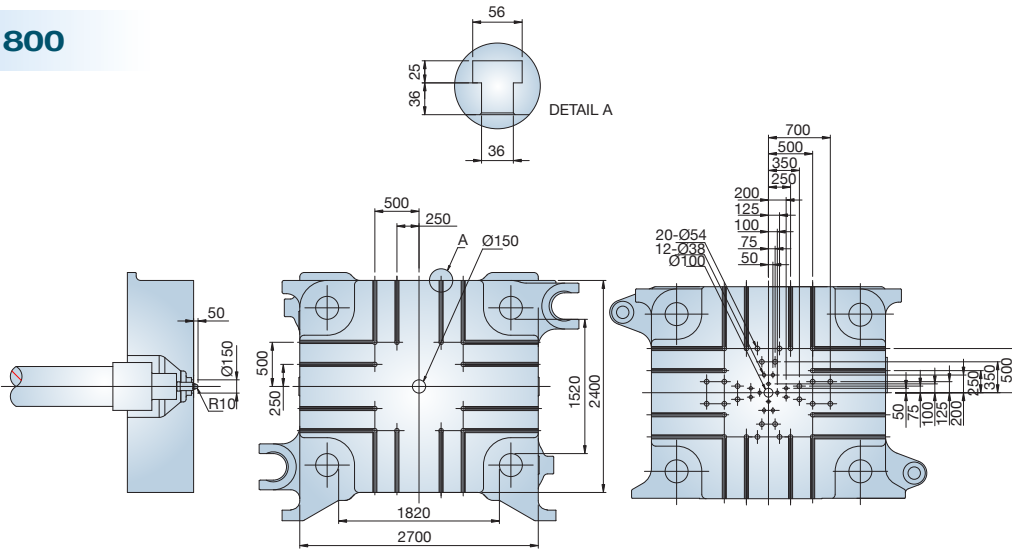
SM1200



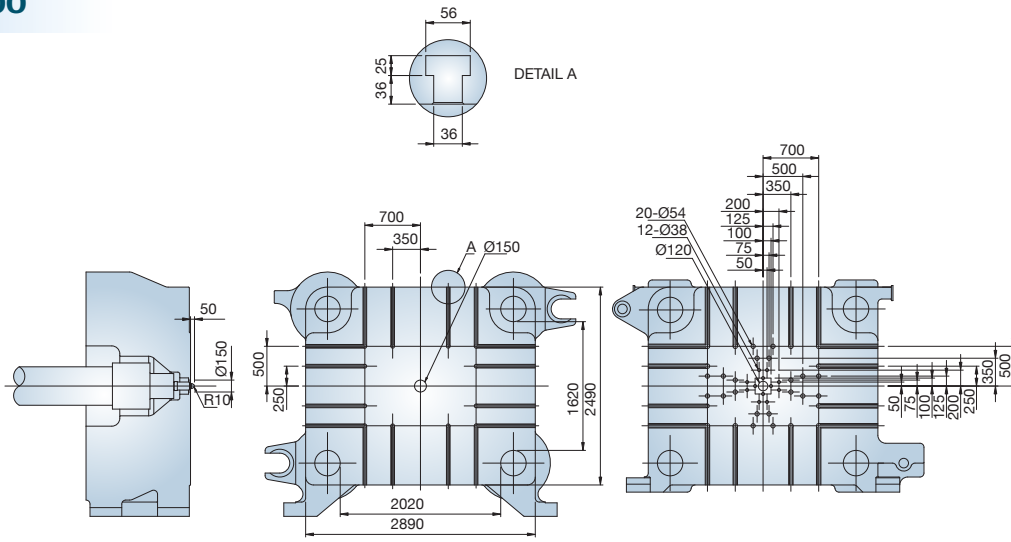
SM1500



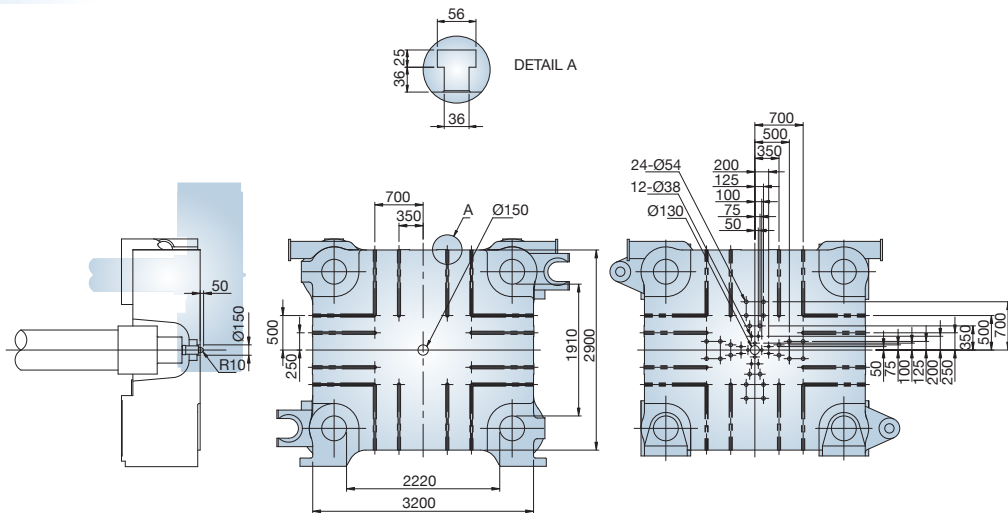
SM1800



SM2500



SM3200

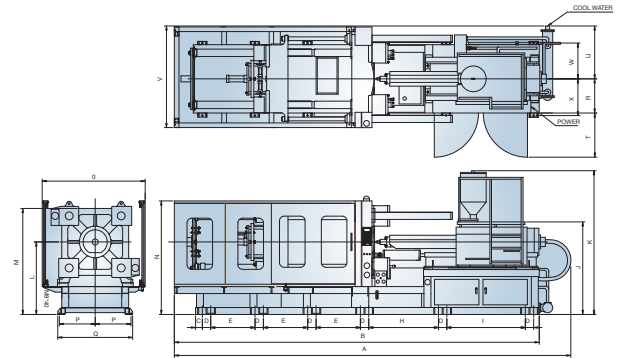


Dimension

SM700

PROVIDE OF WATER		
	WATER	PIPE DIA.
MOULD	50L/min	1"
COOLER	150L/min	1-1/2"
TOTAL	200L/min	

PROVIDE OF POWER		
VOLTAGE	CURRENT	WIRE
220V	355A	325mm ²
380V	195A	150mm ²
415V	179A	125mm ²
440V	169A	125mm ²

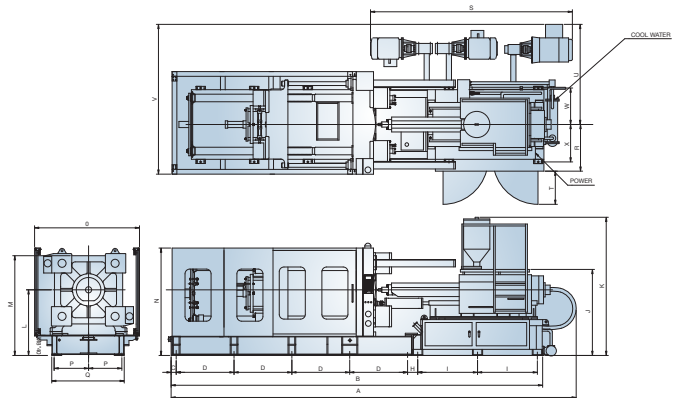


POSITION	A	B	C	D	E	H	I	J	K	L	M	N	O	P	Q	R	T	U	V	W	X
SIZE	8390	7690	140	180	1005	1500	1680	1990	3100	1560	2280	2387	2245	770	1620	735	1050	1140	2245	770	770

SM900

PROVIDE OF WATER		
	WATER	PIPE DIA.
MOULD	50L/min	3/4"
COOLER	150L/min	1-1/2"
TOTAL	200L/min	

PROVIDE OF POWER		
VOLTAGE	CURRENT	WIRE
220V	551A	325mm ²
	571A	
380V	301A	150mm ²
	311A	
415V	276A	125mm ²
	285A	
440V	260A	125mm ²
	269A	

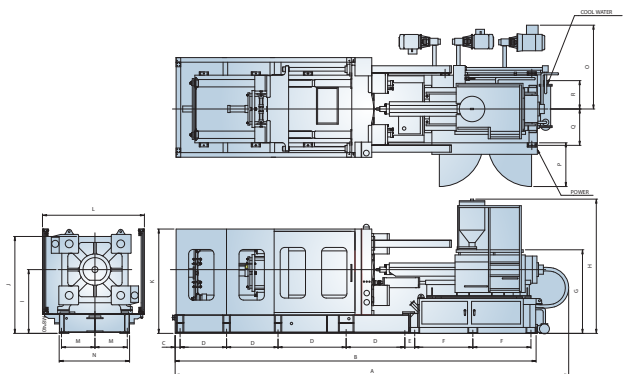


POSITION	A	B	C	D	H	I	J	K	L	M	N	O	P	Q	R	S	T	U	V	W	X
SIZE	9850	9135	125	1400	213	1545	1990	3100	1515	2385	2410	2570	820	1740	960	3800	1050	1965	3250	600	650

SM1200

PROVIDE OF WATER		
	WATER	PIPE DIA.
MOULD	50L/min	3/4"
COOLER	150L/min	1-1/2"
TOTAL	200L/min	

PROVIDE OF POWER		
VOLTAGE	CURRENT	WIRE
220V	745A	400mm ² x2
380V	415A	400mm ²
415V	390A	400mm ²
440V	375A	400mm ²

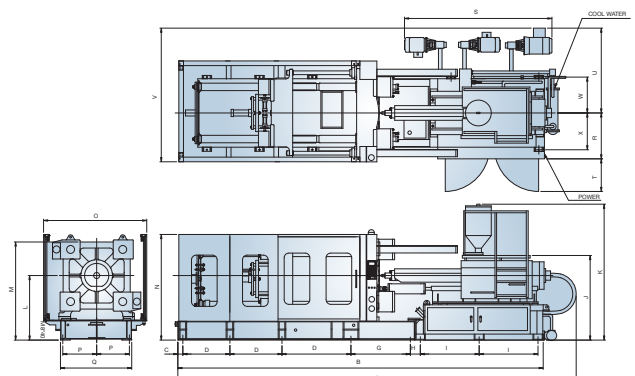


POSITION	A	B	C	D	E	F	G	H	I	J	K	L	M	N	O	P	Q	R
SIZE	10900	10190	310	1500	545	1600	2100	3400	1740	2765	2740	3180	920	2020	2000	1425	1000	800

SM1500

PROVIDE OF WATER		
	WATER	PIPE DIA.
MOULD	180L/min	3/4"
COOLER	200L/min	1-1/2"
TOTAL	380L/min	

PROVIDE OF POWER		
VOLTAGE	CURRENT	WIRE
220V	766A	400mm ² x2
	785A	
380V	430A	500mm ²
	435A	
415V	394A	400mm ²
	399A	
440V	372A	400mm ²
	376A	



POSITION	A	B	C	D	G	H	I	J	K	L	M	N	O	P	Q	R	S	T	U	V	W	X
SIZE	11940	11255	145	1655	1555	525	1975	2215	3515	1910	3055	2980	3310	875	1950	1210	4000	1050	2080	3735	785	785

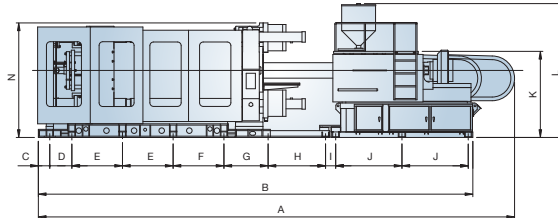
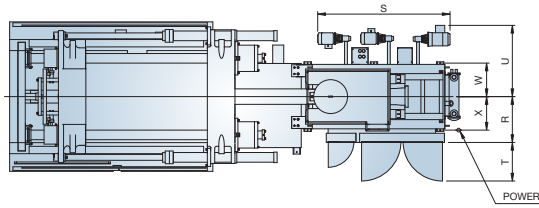
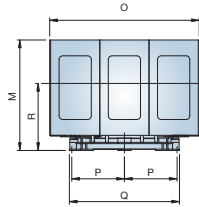
SM1800

PROVIDE OF WATER

	WATER	PIPE DIA.
MOULD	180L/min	3/4"
COOLER	200L/min	1-1/2"
TOTAL	380L/min	

PROVIDE OF POWER

VOLTAGE	CURRENT	WIRE
220V	766A	400mm ² x2
	785A	
380V	430A	500mm ²
	435A	
415V	394A	400mm ²
	399A	
440V	372A	400mm ²
	376A	



POSITION	A	B	C	D	E	F	G	H	I	J	K	L	M	N	O	P	Q	R	S	T	U	W	X
SIZE	13560	11800	310	600	1375	1380	1200	1560	275	1800	2340	3635	3000	3110	4060	1430	2990	1245	4365	1050	2225	910	910

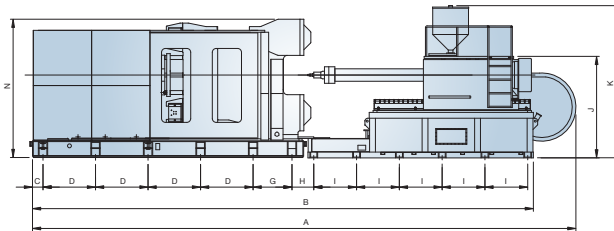
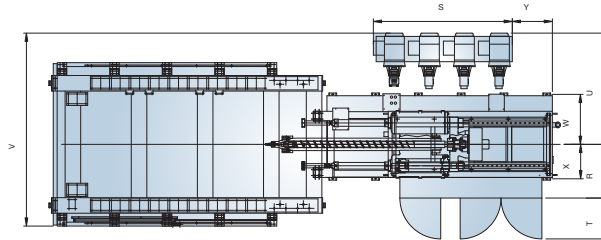
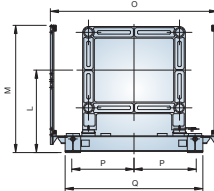
SM2500

PROVIDE OF WATER

	WATER	PIPE DIA.
MOULD	400L/min	3/4"
COOLER	400L/min	1-1/2"
TOTAL	800L/min	

PROVIDE OF POWER

VOLTAGE	CURRENT	WIRE
220V	1491A	400mm ² x4
380V	889A	500mm ² x2



POSITION	A	B	C	D	G	H	I	J	K	L	M	N	O	P	Q	R	S	T	U	V	W	X	Y
SIZE	13485	12875	270	1350	1000	560	1100	2610	3910	2120	3270	3555	4300	1600	3370	1200	3500	1050	2860	5010	1285	885	800

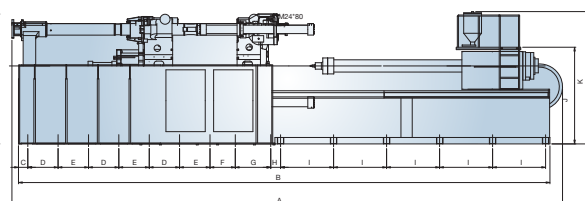
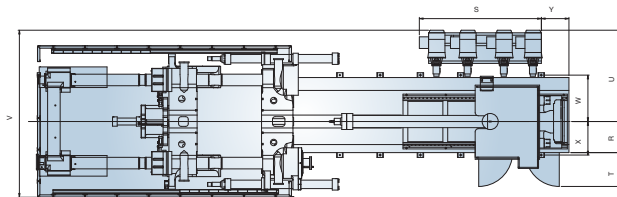
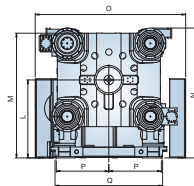
SM3200

PROVIDE OF WATER

	WATER	PIPE DIA.
MOULD	400L/min	3/4"
COOLER	400L/min	1-1/2"
TOTAL	800L/min	

PROVIDE OF POWER

VOLTAGE	CURRENT	WIRE
220V	1491A	400mm ² x4
380V	889A	500mm ² x2



POSITION	A	B	C	D	E	F	G	H	I	J	K	L	M	N	O	P	Q	R	S	T	U	V	W	X	Y
SIZE	14710	14100	290	940	945	785	1100	285	1200	2810	3920	2125	3580	3730	4670	1325	2770	1250	3900	1050	2720	5190	1285	885	800

Machinery

Mold

www.asianplastic.com.tw

Machinery



ASIAN PLASTIC MACHINERY CO., LTD

NO. 1, Sung Chiang North Road, Chung Li Industrial District,
Chung Li, Taoyuan, Taiwan, R.O.C
TEL : 886-3-452-2288 FAX : 886-3-452-0261
E-mail : asian@asianplastic.com.tw
[http : //www.asianplastic.com.tw](http://www.asianplastic.com.tw)